

MAINTENANCE

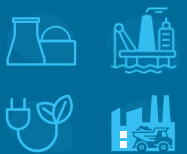
Condition Monitoring




FOR YOUR MARKETS





Life Solutions




Energy Solutions



Track Advance
Recipe



Track Advance
Cip & Sip


Track Advance
Production


Track Advance
Maintenance


Track Advance
Energy

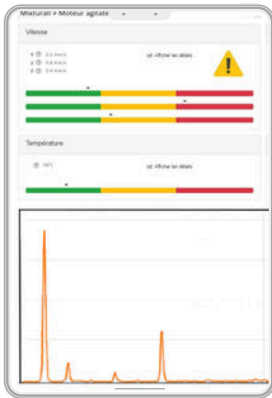
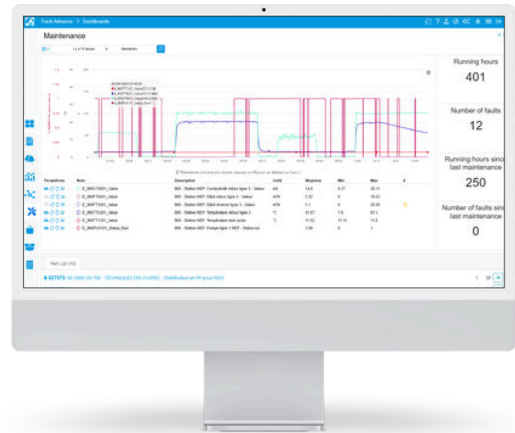

Track Advance
Genealogy


Track Advance
Connector

DATA-DRIVEN MAINTENANCE

Between abnormal vibrations, critical temperatures and worn-out parts, **mechanical faults often hide until they trigger costly and unpredictable downtime.**

Track Advance Maintenance gives you a **clear, continuous view of your equipment's health**, detects anomalies before they become problems and helps you **plan part replacements at the optimal time.** A solution to move from reactive to corrective maintenance.



YOUR EQUIPMENT'S HEALTH AT A GLANCE

- ✓ Health reports of your equipments: valves, pumps, agitators
- ✓ Acquisition of physical data: vibration, temperature, sealing, precision
- ✓ Defect and faults characterization: misalignment, bearing defects, cavitation
- ✓ Association of production data with physical measurements
- ✓ Contextualization of defects using operating condition data
- ✓ Smart Spare Parts dashboard for optimal replacement planning

up to
25 %
reduction in costs
related to failure

up to
+20 %
MTBF

Extend the
lifespan of your
installations

up to
-65 %
MTR

MASTER YOUR EQUIPMENT AND ELIMINATE RISKS

- ✓ Monitor your equipment's health in real time
- ✓ Interpret data and contextualize detected faults
- ✓ Determine the best time to replace spare parts
- ✓ Anticipate failures to reduce unexpected downtime
- ✓ Reduce costs with an optimized maintenance plan

