

CONNECTOR

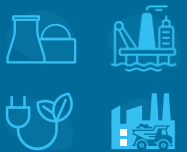
Communication with External Environment




**FOR YOUR
MARKETS**





Life Solutions





Energy Solutions



Track Advance
Recipe


Track Advance
Cip & Sip


Track Advance
Production


Track Advance
Maintenance


Track Advance
Energy

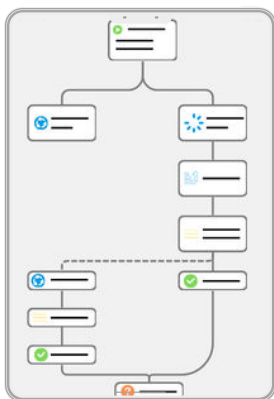
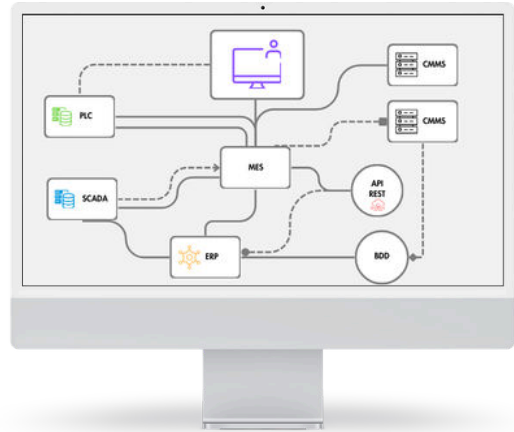

Track Advance
Genealogy


Track Advance
Connector

REMOVE BARRIERS AND UNLEASH DATA FLOW

Every day, your teams juggle between ERP, MES, CMMS, and SCADA to monitor, plan, and validate production. But without integration, **these systems become isolated stations, creating duplicates, errors, and delays.**

Track Advance Connector is an **information exchange toolbox that integrates your existing IT environments, automates data flows and synchronises your information in real time.** The solution to break down barriers between your systems and secure your data.



YOUR DATA FINALLY SPEAKS THE SAME LANGUAGE

- ✓ Aggregation of data from ERP, MES, CMMS, SCADA
- ✓ Multi-protocol, customisable connection: REST API, databases, MQTT, files
- ✓ Creation of automated, configurable workflows
- ✓ Real-time information synchronisation
- ✓ Monitoring of inter-system exchanges

up to
30 %
less errors thanks to digitalisation

100 %
digital solution,
no more paper

total interoperability

up to
90 %
time saved by eliminating manual entry

THE MAIN PIECE OF YOUR DIGITAL PUZZLE

- ✓ Streamline data transfer for faster validation
- ✓ Eliminate manual data re-entry and reduce risks of error
- ✓ Ensure and use reliable, enriched data for rapid decisions
- ✓ Harmonise your IT environments and boost collaboration

